



When your patients entrust you with their eyesight, their vision and your expertise converge. For the world's most advanced surgical and diagnostic solutions in ophthalmology, you can turn to Carl Zeiss Meditec. We're committed to earning your trust anew, every day.

Technical data

| | |
|----------------------------------|--|
| Camera | Dolphin F-201B |
| Sensor | Sony IT CCD |
| Size | 1/1.8" |
| Image memory | 32 MB |
| Resolution | 1628 x 1236 pixels up to 15 minutes max. 814 x 618 pixels up to 45 minutes max. |
| Resolution (megapixels) | 2.01 up to 15 minutes max. 0.5 up to 45 minutes max. |
| Pixel size | 4.4 µm x 4.4 µm |
| Color depth | 8 bits |
| Objective lens | C mount |
| Connection | IEEE 1394a; DCAM v. 1.30 |
| Transfer rate | 400 Mb/s |
| Frame rate | 16 fps |
| Gain (adjustability) | manual, 0 ... 30 dB, auto gain |
| Shutter speeds | 1 µs ... 1 s; auto shutter |
| Smart features | 2x2 binning; real-time shading correction; image sequencing; 3 programmable inputs and outputs; and many more |
| Power supply | DC 8V ... 30V via IEEE 1394a cable or 12-pin HIROSE |
| Power consumption | < 3.5 VA with 12V DC |
| Dimensions (w/o lens; l x w x h) | 115 x 45 x 45 mm (4.53 x 1.77 x 1.77 inches) |
| Weight (w/o lens) | 230 g |
| Ambient temperature (operation) | +5 ... +45° Celsius |
| Ambient temperature (storage) | -10 ... +60° Celsius |
| Dolphin F-201B | |
| Dolphin DM6 C mount video lens | |
| Dolphin FireWire cable | |
| Dolphin I/O combination cable | |

Publication No.: 000000-1374-315
 Specifications subject to change. Printed in Germany 04/06.
 Printed on environment-friendly paper, bleached without the use of chlorine.

Carl Zeiss Meditec AG Tel.: +49 (0) 36 41 2 20-3 33
 Goeschwitzer Str. 51-52 Fax: +49 (0) 36 41 2 20-2 82
 07745 Jena info@meditec.zeiss.com
 Germany www.meditec.zeiss.com

Carl Zeiss Meditec Inc. Phone: +1 925 557 4100
 5160 Hacienda Drive Toll free: +1 800 342 9821
 Dublin, CA 94568 Fax: +1 925 557 4101
 USA info@meditec.zeiss.com
 www.meditec.zeiss.com

Dolphin Entering New Depths



Intelligent and sensitive – like a dolphin

Uniquely integrated into the fundus camera system from Carl Zeiss, the new Dolphin delivers diagnostic images with outstanding brilliance. VISUPAC – an easy-to-use, versatile software program with intuitive user guidance – provides simple, fast, economical and precise results for ICG angiography.

A plus on possibilities

With its high-resolution sensor featuring excellent focus, brilliance and accuracy, the Dolphin is one of the most powerful infrared cameras in professional fundus photography. An ideal supplement to traditional fluorescence angiography, it enables the use of ICG (Indocyanine Green Chorioangiography), thus delivering important additional information for the diagnosis, decision on treatment and prognosis – particularly for the following diseases of the eye:

- Age-related macular degeneration: reliable classification (dry, classic, occult), better display of occult membranes and feeder vessels
- Central serous chorioretinopathy: display of the leakage on a vessel, verification of previous leakage and scars, membrane verification and progression

- Chorioretinitis/pigment epithelitis: better differentiation of single diseases through a comparison of previous or later ICG images
- Macroaneurysms

Focused on the patient

Developed specifically for ophthalmologists, VISUPAC software makes your work easier. Take advantage of the easy-to-understand user functions and benefit from a professional data and patient management system. All data and images are assigned to your patients and also immediately available for review. The high level of security, compatibility and easy integration into existing applications, as well as modern communications set the standards for fundus photography of the future and guarantee flexible and uncomplicated use for your daily work.

The right time is now

The use of high-performance FireWire cameras has also become the new standard in ophthalmology. Switch now with Zeiss to this digital technology as easily and efficiently as never before. A safe investment that ensures your link to the future.

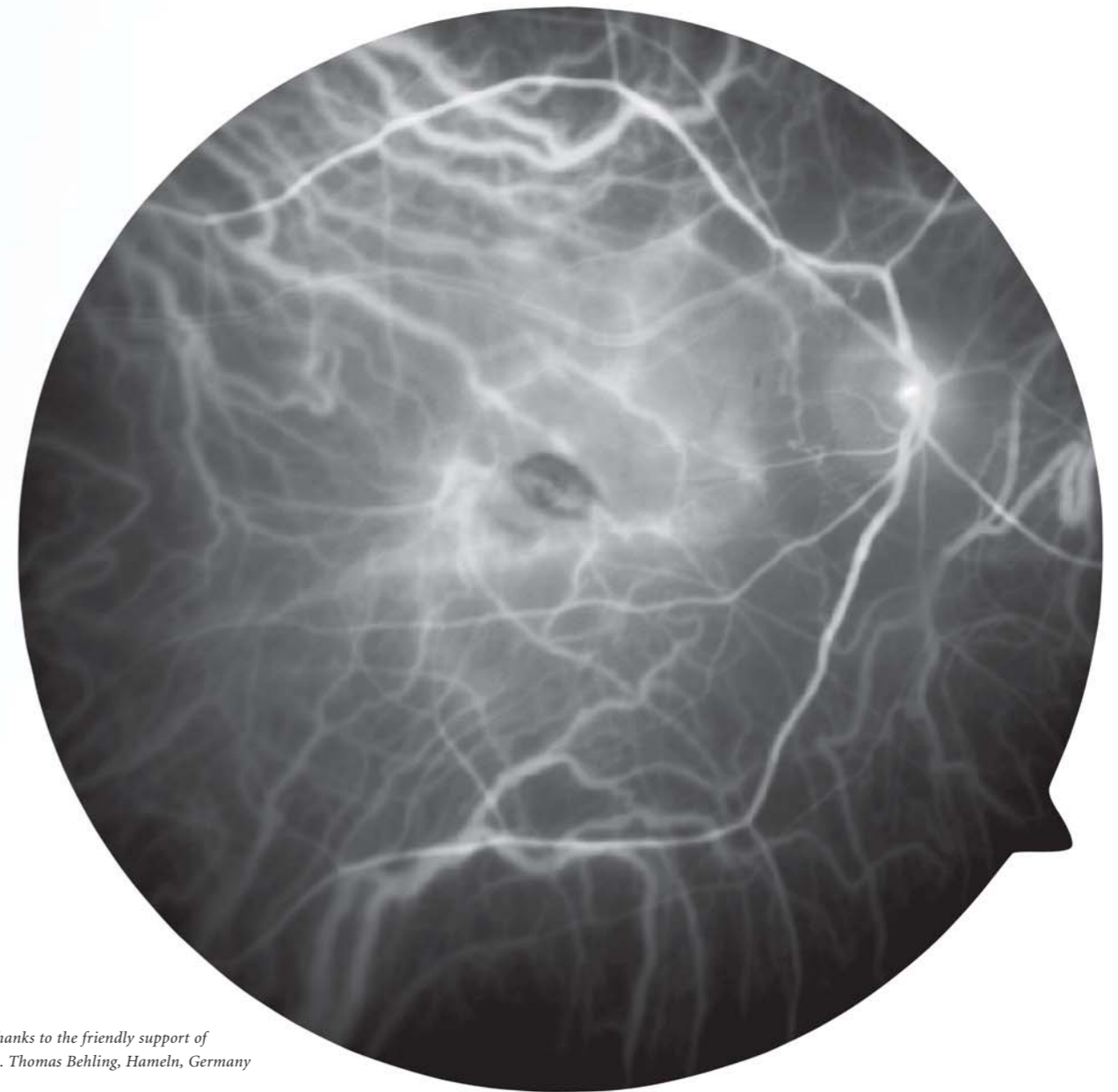


Image thanks to the friendly support of Dr. med. Thomas Behling, Hameln, Germany

Dolphin F-201B and h101



Dolphin F-201B and JVC KY-F75U



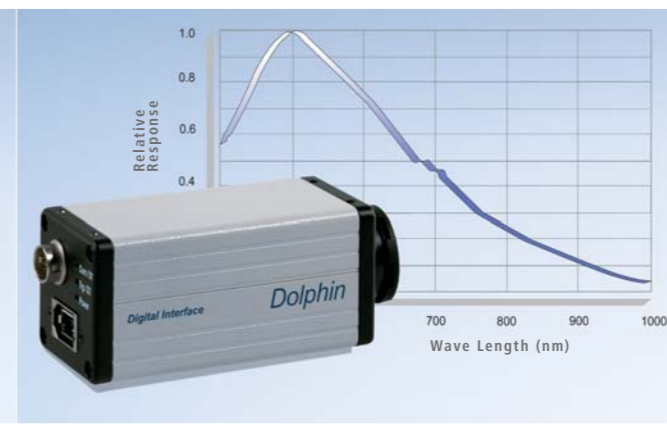
Dolphin F-201B and ZK-5



Connections



Characteristic curve



VISUPAC 481

